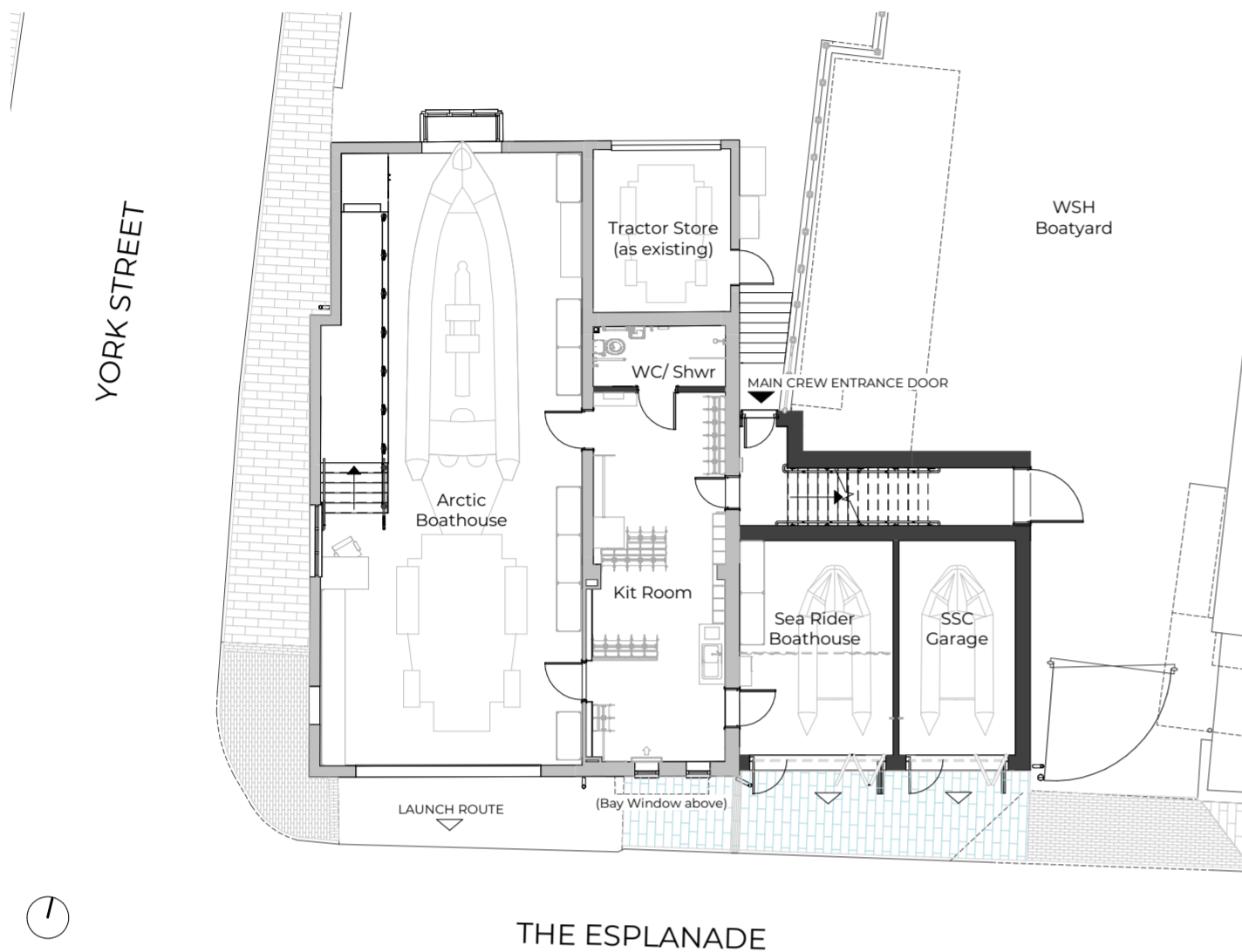
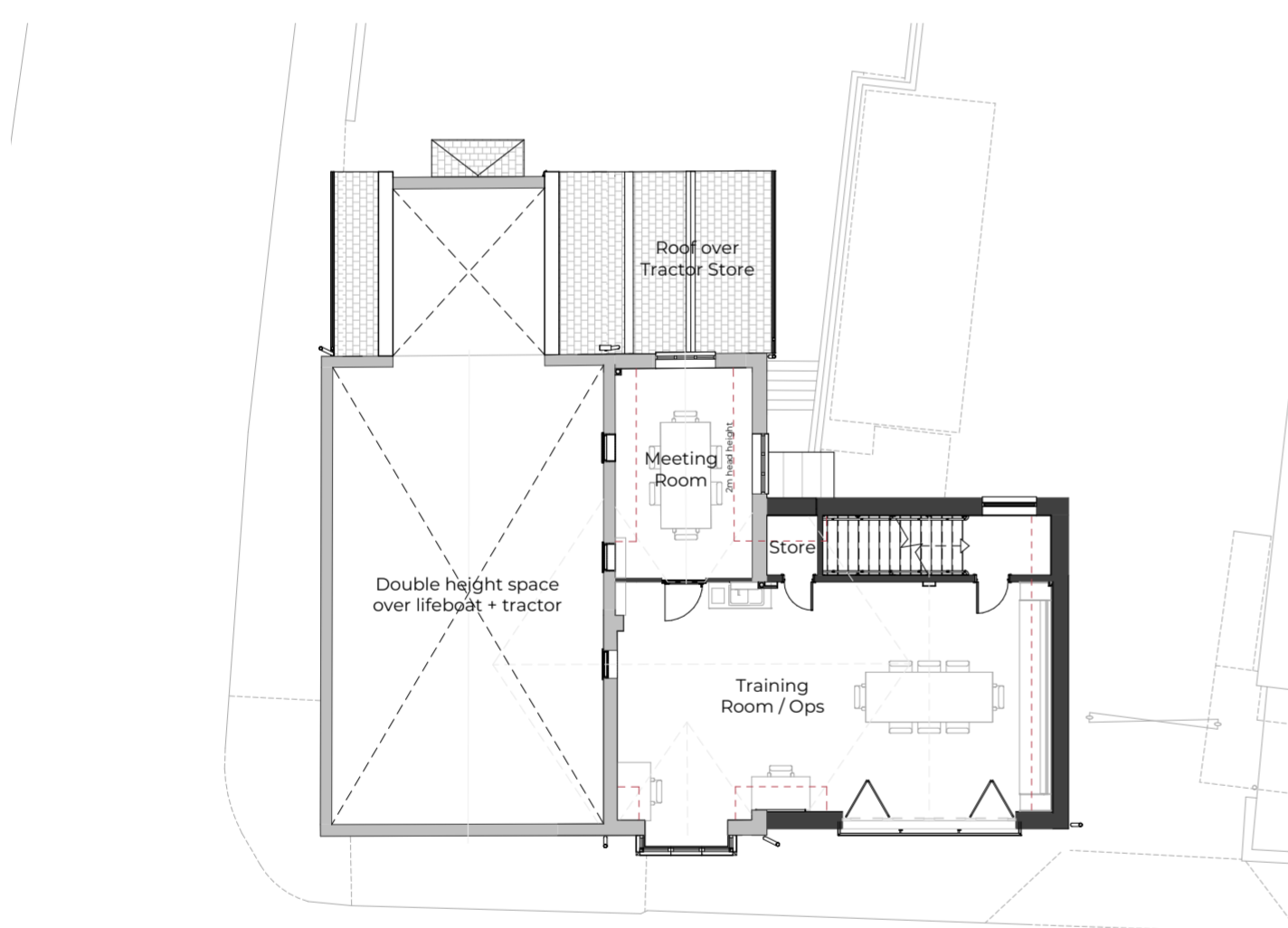


SIDMOUTH LIFEBOAT STATION

Extension and alterations



Ground floor plan



First floor plan

Summary

Following a successful planning process, permission for a two-storey extension to the east of the Sidmouth Lifeboat station has been granted. The extension will enable all lifesaving assets to be housed under one roof, addressing the current issue of the Sea Rider being stored in an external remote garage.

A competitive tender process has been carried out and local contractor **Skinner Construction Ltd** have been appointed. Skinner were selected due to their extensive experience and demonstrated quality of their work.

- Improved response time for Sea rider launch
- Improved training facilities for crew
- Larger capacity area for essential crew kit to be stored, with drying facilities to ensure kit longevity
- Enhanced circulation for faster, safer movement during emergencies
- Dedicated casualty treatment area that can be decontaminated if necessary
- Provision of private changing areas
- Construction of integrated accessible WC/ Shower Room to support volunteer recruitment
- Additional floor area upstairs to allow for private office space when dealing with sensitive situations, i.e. police during call outs or crew wellbeing matters.
- Improved public-facing areas, including the Arctic Lifeboat Viewing Gallery
- Improve thermal building elements through sustainable methods

Since the planning application was submitted, the Kit Room internal layout has evolved to suit the needs of the lifeboat crew and support staff. These updates optimise space and circulation, especially during emergency responses (“shouts”), and ensure the station will remain fit for purpose for many years to come.

Thermal comfort and energy efficiency remains a key aspect to the design, with sustainable interventions designed to reduce both running and maintenance costs through enhanced insulation, an air source heat pump and underfloor heating.

Sidmouth Lifeboat service will still be operational during these works, with the main boat hall and shop still open to visitors. The kit room and office will be closed off during the works and EDDC have provided the use of the parking area behind the station for temporary cabins as kit room and office, and the compound area for the contractors.

- Late October – Temporary cabins set up and office/kit room relocated
- Early November – Build commences
- End of March – Interior renovations
- Late summer 2025 – Targeted completion
- Autumn 2025 – Sidmouth Lifeboat operates from completed building

We would like to thank all locals and visitors for your patience during the works. We will remain on service and will still respond at HM Coastguard request.

